

SmartEdge Digital Classroom Solution

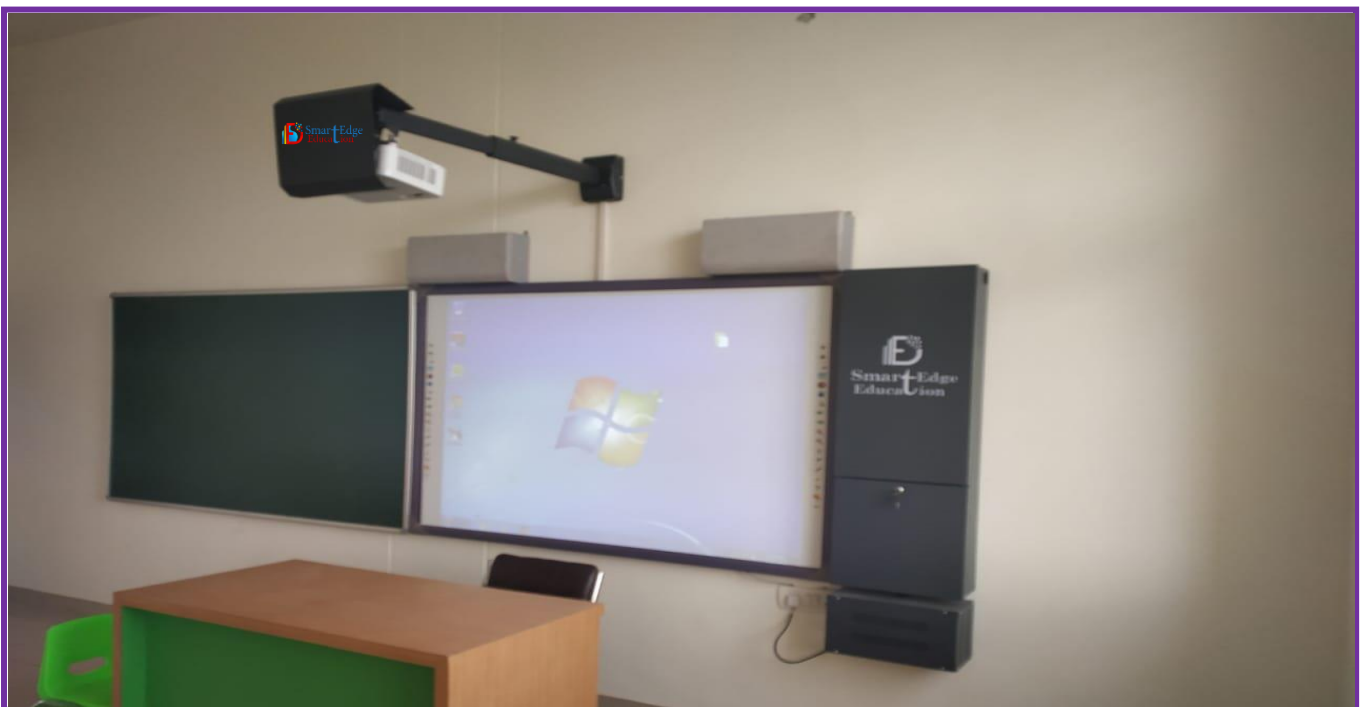
About us

SmartEdge is a leading manufacturer and supplier of classroom solutions. We produce fast range of products ranging from Interactive boards, compact wall mounted computer cabinet, wide range of projectors, visualizers, smart school ICT content. Our products are widely used in various institutes, schools, colleges and offices. The offered range is known for its high durability, reliability and stain resistant nature.

The brand SmartEdge symbolizes its strong commitment to quality and constant endeavor to disrupt the current technology to provide better and faster products. The company has grown from providing classroom products to providing smart school solutions, and aims to make learning interactive and effective.

SmartEdge's policy of "Complete Classroom Solutions" states its aim to cater to customers looking for easy usage of products. It has a dedicated team of professionals who provide services from installation, training about usage and are always at service to answer any consumer query thereby providing active support services.

The company's products are versatile and durable and are tested at various points before being delivered to customers. We create perfect combination of smart intelligent technology, functionality and modern technique at minimum cost to customers. Future education is our passion and we will continue to devise new ways of effective learning.



Smart Classroom Solution



Specialty

- Improves teacher effectiveness and productivity in class.
- It brings abstract and difficult curriculum concepts to life inside classrooms. Improves teacher effectiveness and productivity in class.
- Makes learning an enjoyable experience for students.
- Improves academic performance of student.
- Enables instant formative assessment of learning outcomes in class.
- It also enables teachers to instantly assess and evaluate the learning achieved by their student in class.

Hardware Comprises

1. Interactive Board
2. Multimedia all in one PC (with wireless air mouse, speakers & document camera).
3. Projector
4. UPS with case
5. Green chalk board (72x48/60x48/48x36)
6. Projector mounting stand
7. VGA/HDMI, Power Cables

Software

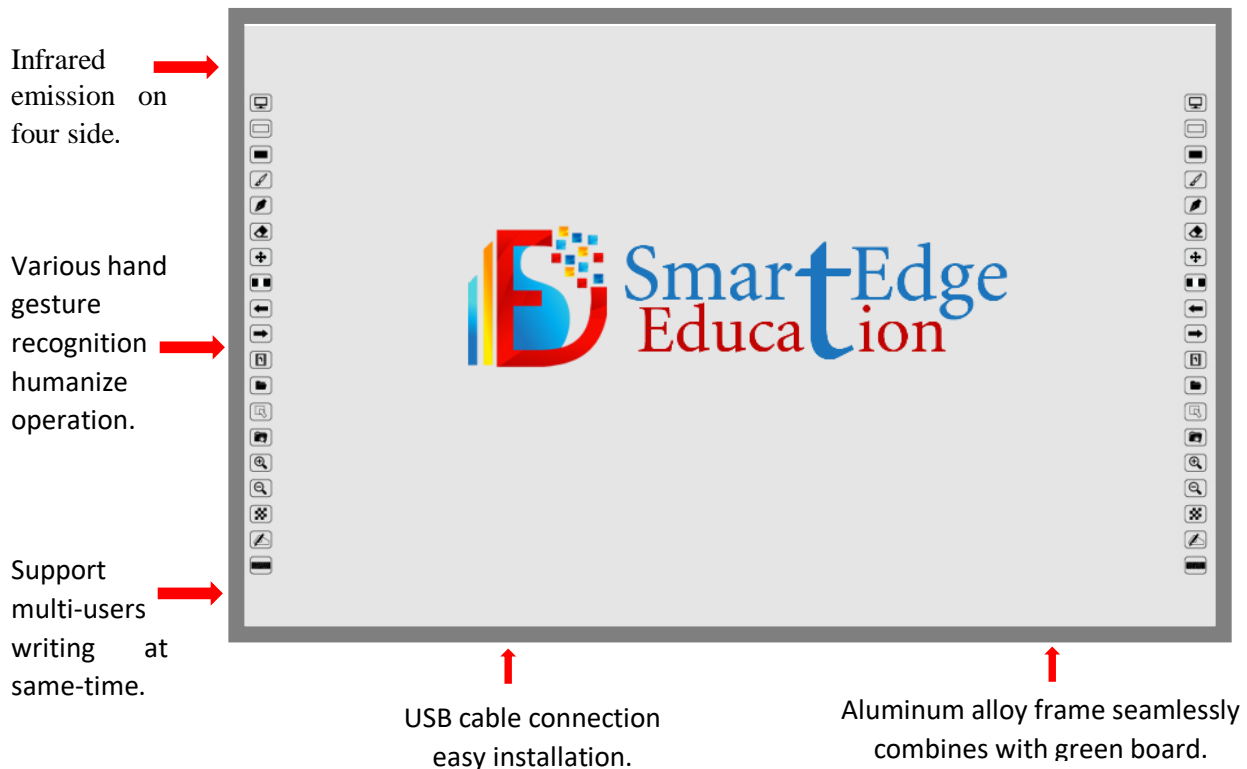
Smart School Content

- Easy user interface.
- Animated 2D/3d content.
- Offline content.
- English & Hindi voiceover.
- Activities-Match the following. True/False.
- Puzzle, Games, Worksheets.
- Interactive Learning.

IW BOARD Software

- With proper teaching tool including pen, spotlight, eraser, rulers, support screen record, multi document function, color filling etc.
- Support screen record and playing back.
- Support annotation and edit of file with word, ppt format.
- Support any polygon drawing.
- Support unlimited writing range by moving page freely.
- Support picture zoom in/out, rotation by finger gesture.

Infrared Technology Interactive Board



Fast Response



Finger Touch



Screen Record



Built in Keyboard



Low Maintenance



Multi-User



Physical Shortcuts



Durable and Long Lifetime

Features

- Infrared sensor technology.
- 4 point touch with 4 point calibration.
- Interface USB 2.0. International standard communication distance 1.5m, supports 10-15m.
- Power consumption < 100mA.
- OS Win XP/7/8/8.1/10/Linux/Mac 10.X.
- Operating temperature -20C~65C.
- Support multi-touch under with latest windows with popular teaching tools including pen, support record, multi document function, color filling, control etc.
- Support screen record and playing back.
- Support lines, graphics, triangle, pentagons any polygon drawing and can rub, cut, clone, copy and delete any selected objects.
- Support unlimited writing range by moving page freely.
- Improves academic performance of student

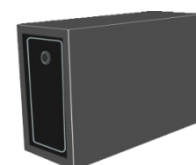
Multimedia All in One PC

Features

- Professional application software, support mouse wheel to zoom in/out image.
- A smart key to freely switch the built-in speaker and external speaker.
- 50mm ultra-thin design, available to embed into the push & pull chalk board.
- Document camera support audio and video simultaneous recording.
- HDMI central control function, HD multimedia devices HDMI signal switching are available.
- Unique infrared remote control coding function, after coding, any controller scan control the device.
- Hidden button design, button are hidden when not in use.
- One touch ON system & lockable.
- Available in black color.



UPS with wall mounted case



Fast Response



Built in CPU



Air Mouse



Built in speaker



Built in visualizer



Low maintenance

	Smartedge IWB	
Model		
Overall diagonal size (mm)	82"	100"
Overall size (mm)	1712*1228	2180*1350
Active area dimension (mm)	1648*1164	2114*1284
Active projection dimension	1564*1164	2054*1284
Aspect ratio	4:3	16:10
Front detachable design	N/A	YES
Touch points	10	
Resolution	32768*32768	
Touch Input	Touch sensitive (Finger/Stylus/pen)	
Hotkeys	18 hotkeys on both sides	
Signal tracking rate	8m/s	
Precision	0.05 mm	
Calibration	4, 9 or 20 points	
Softwares	Interactive Education Platform	
Surface	Porcelain steel or painted steel or ceramic and non-ceramic	
Power supply	USB, ≤600mW	
Operating systems	Windows XP/2003/Vista/7/8/8.1/10, Linux, Mac 10.X	
Storage environment	Temperature: -20°C ~ 50°C Humidity: 15%-85%	
Working environment	Temperature: -20°C ~ 50°C Humidity: 15%-85%	
Installation	Wall mounting, cabinets, stand mounting	
Warranty	Three-year warranty	
Projector	3600 Lumens	
UPS	IKV	
Integrated Cabinet CPU	As per customer Requirement	
Speaker	50 Watt RMS 2.0	

Document Camera

Features

- Built in microphone.
- Magnetic auto locked arms.
- Can be used with along microscope.
- OSD Menu.
- Non-driver USB.
- Support 16:9 display.
- Optical focus/auto focus.
- Mode save/recall.
- HDMI High definition output.



Fast Response



Auto Focus



HDMI



Auto Lock



Easy to use



Portable

Camera

Imaging Device:	¼” HD Module
Main Camera:	5000000 Pixel (1920x1080)
Frame Rate:	15mfps@2592*1944,30mfps@1080p
Imaging Device:	¼” HD Module

Specification

Ports:	USB2.0x1
HDMI Out:	NO
Scan Speed:	1 Second
Video Freeze:	Yes
Effective area:	A4
Auxiliary Light:	LED Light

Others

Software Function:	Document camera, whiteboard mark, PDF transferring
Power:	DC 5v
Net Weight	1.2kg
WxDxH:	370*120*120mm

Classroom Projector



- Smart Eco Power Saving technology.
- Up to 100000 hours long lamp life.
- <0.5w standby mode.
- New 3D format for entertainment.



Best Choice at class-leading value for small-medium space.

Long Throw Projector



- Smart Eco Power Saving technology.
- Blu-ray full HD 3D Support.
- Lamp save model for lower replacement cost.



Best Choice at class-leading value for small-medium space.

Short Throw Projector



- Smart Eco Power Saving technology.
- Blu-ray full HD 3D Support.
- Short throw projection.
- Interactive Point Write Kit Compatible.



Ultra-sharp Images in a Short Distance.

Interactive Flat Panel Display (IFPD)



- 20- Point Multi-Touch.
- Floating Pen –Annotation on Demand.
- View Board Cast Content Sharing Software.
- Built-in ARM quad-core CPU with 16 GB Storage.
- Out of box collaboration.

Specification

<p>LCD Panel</p>	<p>Panel Size: 75" Type/ Tech: TFT LCD Module with DLED Backlight Display Area (mm): 1649.66(H) x 927.94(V) (74.5" viewable) Aspect Ratio: 16:09 Resolution: 3840 x 2160 Colors: 1.07B colors (10bit) Brightness: 350 nits (typ.) 300 nits (min.) Contrast Ratio: 1200:1 (typ.) Response Time: 8 MS Viewing Angles: H = 178, V = 178 (typ.) Backlight: DLED Backlight Life: 30,000 Hours Min. Hardness: 7H</p>
-------------------------	---

Touch	Type/ Tech: IR Recognition Touch Resolution: 32767 x 32767 Touch Point: 20 points touch, 10 points writing Response Time: <15ms System: Windows 10 / Windows 8 / Windows 7 / Windows XP / Vista / Linux / Mac / Android / Wince / Chrome Life Time: 80,000hrs
Input	HDMI: x 3 RGB / VGA: x 1 DisplayPort: x 1 Audio: x 1 CVBS (AV): x 1 RS232: x 1 PC Slot: x 2
Output	HDMI: x 1 (for all sources) Audio (Earphone out): x 1 SPDIF: x 1
USB	2.0 Type A: x 3 (front x 1, for both embedded player and slot-in PC) 3.0 Type A: x 3 (front x 2, for both embedded player and slot-in PC) 2.0 Type B (For touch): x 2
Speaker	16W x 2

Interactive White Board and Green Board



Product Name:	Single Framing interactive white board and green board.
Weight:	63kg (approx.)
Product Size:	2950x1280mm
Frame:	Industrial Electrophoresis of aluminum alloy.
External Frame Width:	100mm
Thickness:	45mm
Inner Frame Width:	35mm
Thickness:	1.8 cm with plastic corner solid structure, abrasion resistance, tensile, no deformation, appearance